

1 - Configuring the Callshop Module

- Step 1 :** Go to the link http://www.alloforless.com/download/callshop_v1.zip and click the application of the call shop.
- Step 2 :** Once you install the application, the call shop will be installed in your computer.
- Step 3 :** Click on the **"Booth Management"** button
- Step 4 :** Enable *"Line 1"* and on the IP field, enter the IP of the Linksys PAP2 device, And select *"Port 1"*. This will add the *"Line 1"* of this Linksys PAP2.
- Step 5 :** To add *"Line 2"* of this same Linksys PAP2, enable *"Booth 2"*, enter same IP as above, and select *"Port 2"*.
- Step 6 :** If you wish to add a second Linksys PAP2 device, follow steps 4 and 5 by enabling *"Booth 3"* and *"Booth 4"*. You can add up to 10 booths, which means up to 5 2-port Linksys PAP2 devices.
- Step 7 :** Once you have added and configured the desired booths, click OK, and restart the Callshop software by closing the application and opening it again.

2 - Configuring the Linksys PAP2

- Step 1 :** Login to the Linksys PAP2 configuration page, and go to *"Admin>>Advanced"* mode.

The screenshot displays the Linksys PAP2 configuration interface. The top navigation bar includes 'Voice', 'Info', 'System', 'SIP', 'Regional', 'Line 1', 'Line 2', 'User 1', and 'User 2'. The 'Advanced' mode is selected, and the 'Admin' button is highlighted. The main content area is divided into several sections:

- System Information:** DHCP: Disabled, Host Name: LinksysPAP, Current Netmask: 255.255.255.0, Primary DNS: 10.0.0.254, Secondary DNS: (empty), Current IP: 10.0.0.151, Domain: (empty), Current Gateway: 10.0.0.1.
- Product Information:** Product Name: PAP2T, Software Version: 5.1.3(LS), MAC Address: 0018F8841C0A, Customization: Open, Serial Number: FL100FB29363, Hardware Version: 0.1.5, Client Certificate: Installed.
- System Status:** Current Time: 1/1/2003 16:14:27, Broadcast Pkts Sent: 0, Broadcast Pkts Recv: 3813, Broadcast Pkts Dropped: 0, RTP Packets Sent: 6135, RTP Packets Recv: 3869, SIP Messages Sent: 3158, SIP Messages Recv: 190, External IP: (empty), Elapsed Time: 01:28:13, Broadcast Bytes Sent: 0, Broadcast Bytes Recv: 370682, Broadcast Bytes Dropped: 0, RTP Bytes Sent: 167430, RTP Bytes Recv: 77231, SIP Bytes Sent: 1259296, SIP Bytes Recv: 70636.
- Line 1 Status:** (empty)

Step 2 : Go to “System” page

Step 3 : Change the “DHCP” to “No”.

The screenshot shows the 'System' configuration page with the following fields and values:

Field	Value
Enable Web Server	yes
DHCP	no
Static IP	10.0.0.151
Gateway	10.0.0.1
NetMask	255.255.255.0
HostName	
Domain	
Primary DNS	10.0.0.254
Secondary DNS	
DNS Query Mode	Parallel
Syslog Server	
Debug Server	10.0.0.135
Debug Level	3

Annotations:

- A box labeled "Set DHCP to NO" points to the DHCP dropdown menu.
- The "no" option in the DHCP dropdown is circled in red.

Buttons: Save Settings, Cancel Settings

Step 4 : Set the “Static IP” to the IP you wish to assign this device.

Close-up of the Static IP field showing the value 10.0.0.151 circled in red. An arrow points from a box labeled "This will be device IP" to the circled value.

Step 5 : Set the “Gateway” to the router IP.

Close-up of the Gateway field showing the value 10.0.0.1 circled in red. An arrow points from a box labeled "Your router's gateway IP" to the circled value.

Step 6 : Set the “NetMask” to “255.255.255.0” or the relevant Subnet Mask of the LAN.

Close-up of the NetMask field showing the value 255.255.255.0 circled in red. An arrow points from a box labeled "Subnet Mask" to the circled value.

Step 7 : Set the “Primary DNS” to the router IP (same as the “Gateway” IP).

HostName:	<input type="text"/>	Domain:	<input type="text"/>
Primary DNS:	10.0.0.254	Secondary DNS:	<input type="text"/>
DNS Query Mode:	Parallel		
Debug Server:	10.0.0.135		3

The Primary DNS

Step 8 : Set the “DSN Server Order” to “DHCP, Manual” from the drop down list.

HostName:	<input type="text"/>	Domain:	<input type="text"/>
Primary DNS:	10.0.0.254	Secondary DNS:	<input type="text"/>
DNS Server Order:	DHCP,Manual	DNS Query Mode:	Parallel
Syslog Server:	<input type="text"/>	Debug Server:	10.0.0.135
Debug Level:	3		
Secondary NTP Server:	<input type="text"/>		

DNS Server Order to DHCP, Manual

Step 9 : Enter the “Debug Server” IP address as the IP of the computer (PC) on which the callshop module is installed.

HostName:	<input type="text"/>	Domain:	<input type="text"/>
Primary DNS:	10.0.0.254	Secondary DNS:	<input type="text"/>
DNS Server Order:	DHCP,Manual	DNS Query Mode:	Parallel
Syslog Server:	<input type="text"/>	Debug Server:	10.0.0.135
Debug Level:	<input type="text"/>	Primary NTP Server:	<input type="text"/>
Secondary NTP Server:	<input type="text"/>		

The PC IP where Callshop is installed

Step 10: Select “Debug Level” as “3” from the drop down list.

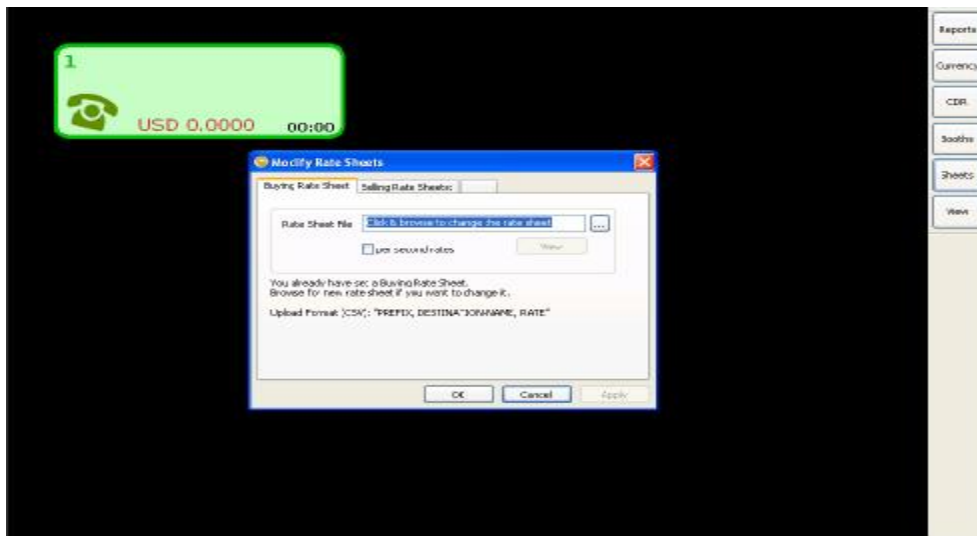
HostName:	<input type="text"/>	Domain:	<input type="text"/>
Primary DNS:	10.0.0.254	Secondary DNS:	<input type="text"/>
DNS Server Order:	DHCP,Manual	DNS Query Mode:	Parallel
Syslog Server:	<input type="text"/>	Debug Server:	10.0.0.135
Debug Level:	3	Server:	<input type="text"/>
Secondary NTP Server:	<input type="text"/>		

Debug Level should be 3

Step 11: Save and reboot the device.

NOTE: A static IP **SHOULD** be set
Debug Server IP **SHOULD** be IP of PC where callshop is installed.

3 – Uploading Buying Rate Sheet to Callshop Module



Step 1 : Go to smart and export the rate sheet.

Step 2 : Keep prefix, destination, rate and delete other columns from the rate sheet which you downloaded from SMART.

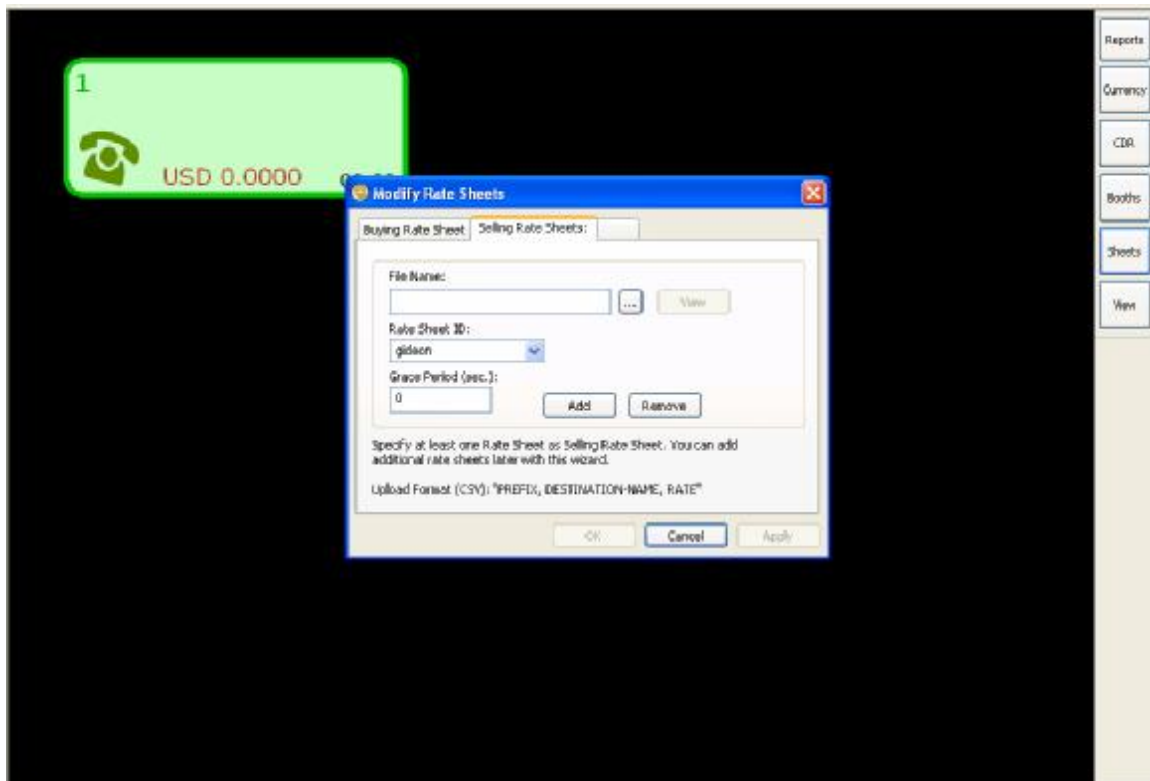
Step 3 : Save the file in the same format (.csv).

Step 4 : Open call shop and click sheets.

Step 5 : On the view field, browse the rate sheet file which you prepared and saved.

Step 6 : Click "APPLY" and wait till the callshop is successfully uploaded.

4 – Uploading Selling Rate Sheet to Callshop Module



- Step 1** : Go to smart and export the rate sheet.
- Step 2** : Keep prefix, destination, rate and delete other columns from the rate sheet which you downloaded from SMART.
- Step 3** : Save the file in the same format (.csv).
- Step 4** : Open call shop and click sheets.
- Step 5** : On the file name, browse the rate sheet file which you prepared and saved.
- Step 6** : Give a Rate sheet ID (example – Abbas) and grace period if you need.
- Step 7** : Click add button
- Step 8** : Click “APPLY” and wait till the callshop is successfully uploaded.

5 – Deleting selling rate sheet from Call shop.

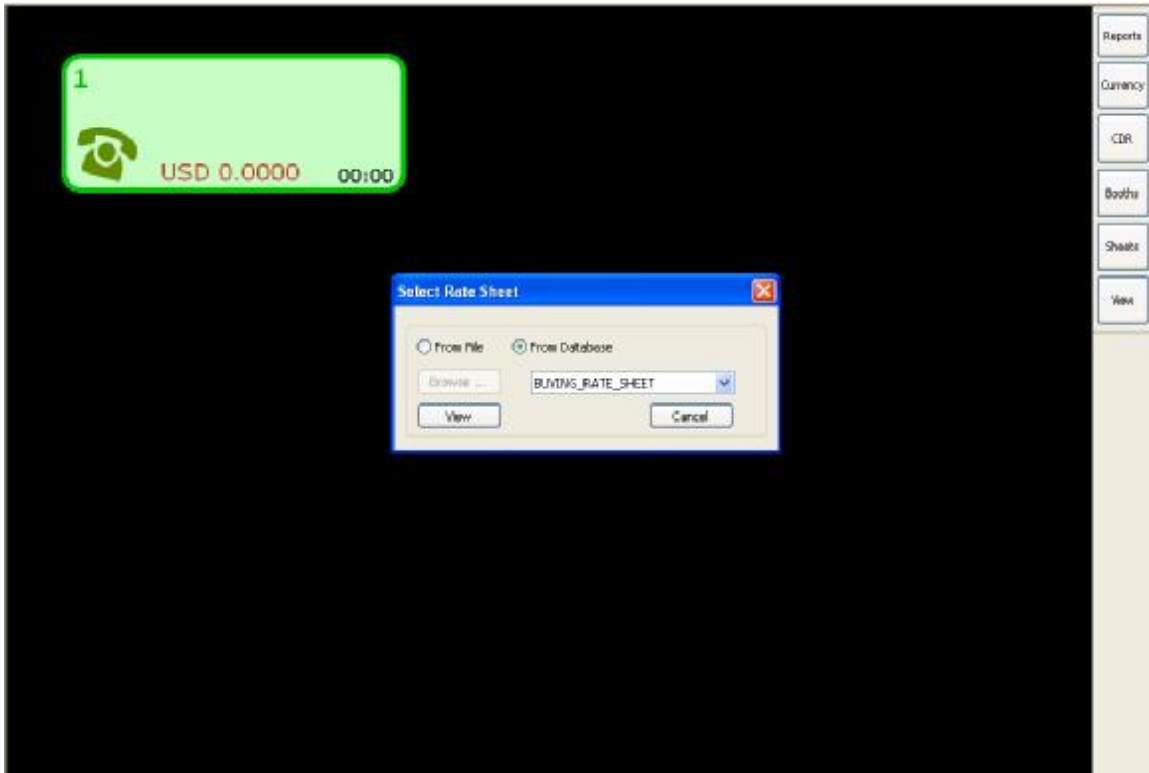
Step 1 : Click sheets.

Step 2 : Go to selling rate sheet column.

Step 3 : Select the rate sheet ID

Step 4 : click remove button and the rate sheet will be deleted.

6 – View



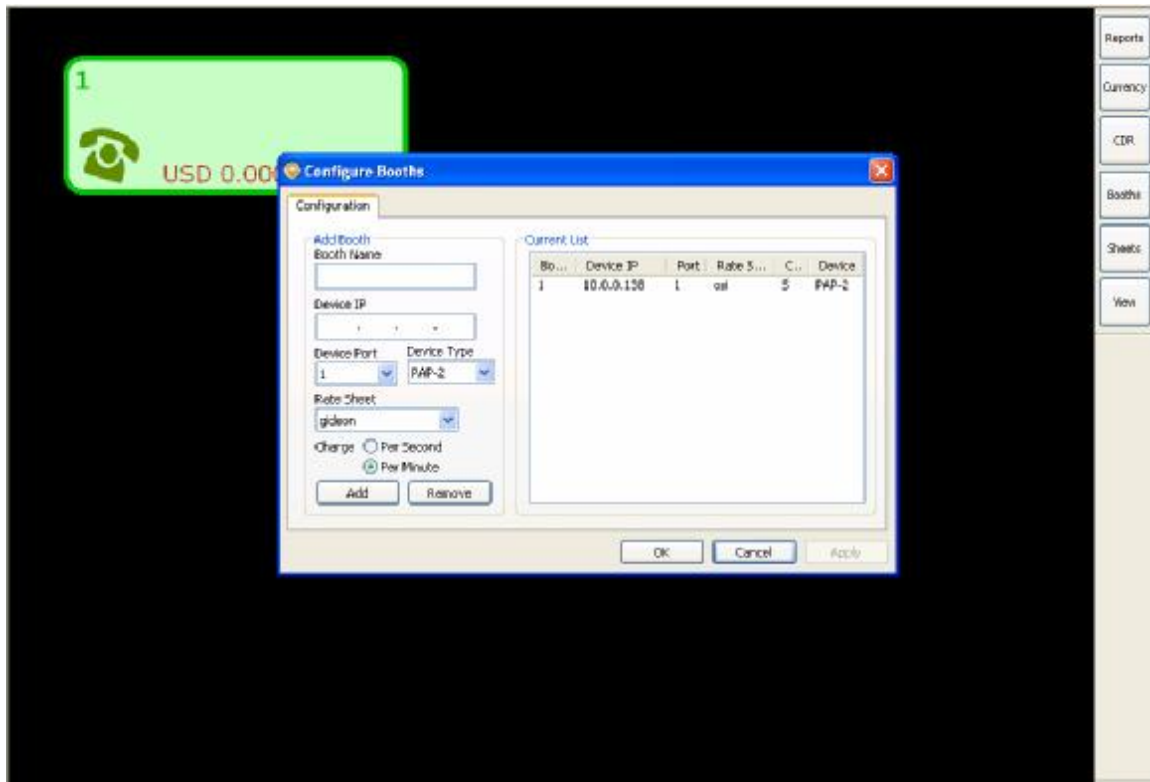
Step 1 : Click view.

Step 2 : Select the rate sheet which you want to view.

Step 3 : Press view to see the rate sheet.

Step 4 : Rate sheet will be opened.

7 – Booths



Step 1 : Click booth.

Step 2 : Give a booth name.

Step 3 : Type the Device IP, Device port and Device type.

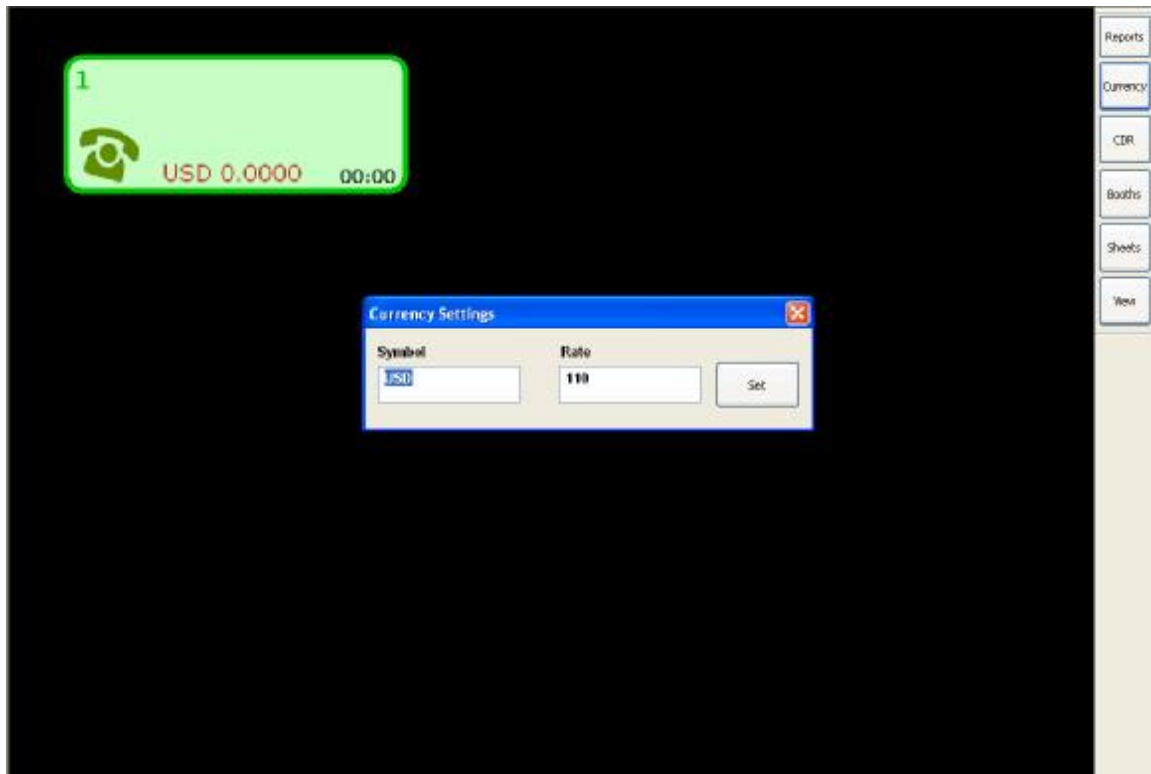
Step 4 : Select the rate sheet.

Step 3 : Select charge per minute or per second for the booth.

Step 4 : Click “Add” button.

Step 5 : Click “Apply” and wait till the configuration is completed.

8 – Currency



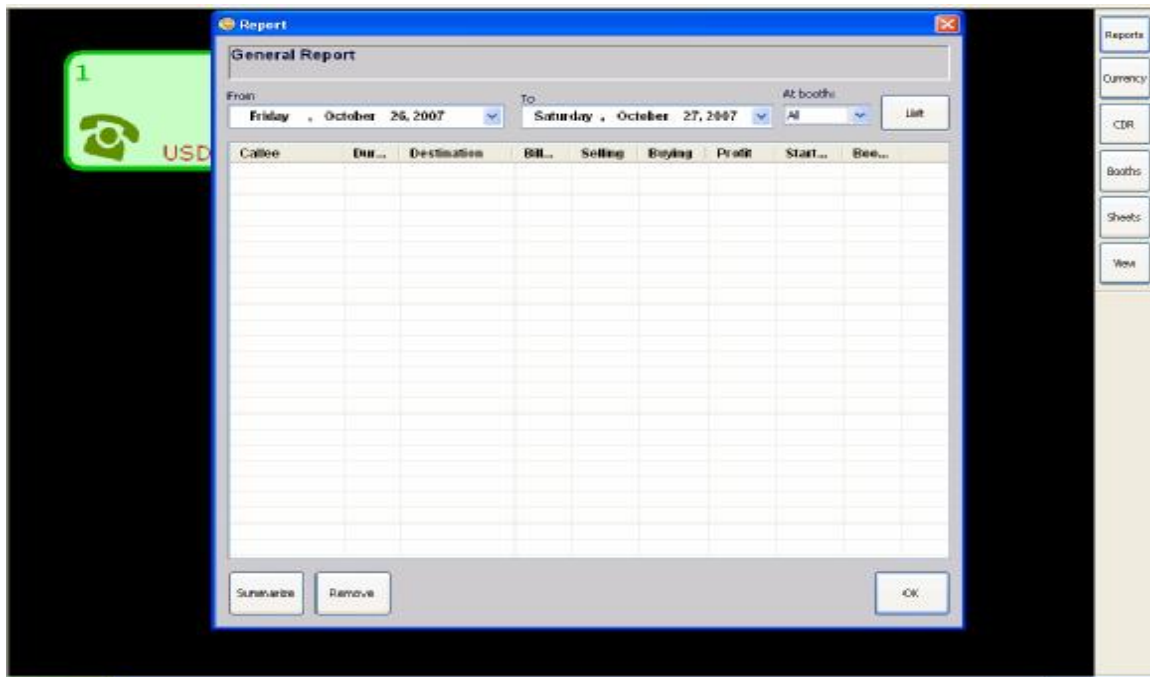
Step 1 : Click Currency.

Step 2 : Give the symbol as shown in the screen shot example.

Step 3 : Give the exchange rate.

Step 4 : Click "SET" button and wait till the settings is done.

9 - List



Step 1 : Once the call is completed, click on reports.

Step 2 : Press list button and call details will appear.

Step 4 : If you want to see the call details of only one booth, select the booth number in the report page and click list.

Step 3 : To remove the call detail from the list, highlight the call and click remove

Step 4 : To see the summary of a particular call, highlight the call and click summarize

Step 5 : To check call details for a particular period, Enter the date and click list.